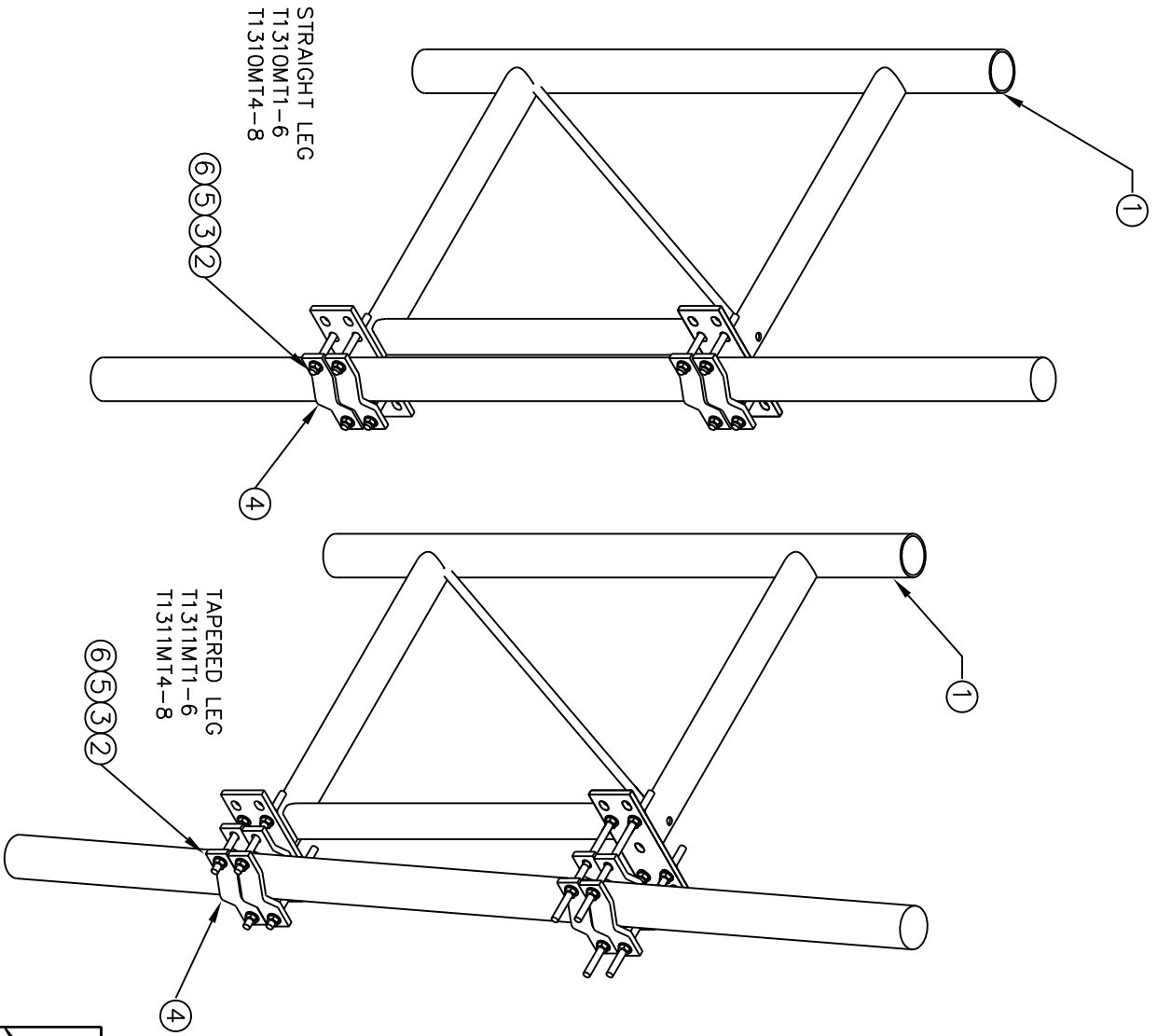


P/N	T1310MT/T1311MT
TITLE	STANDOFF BRACKET



T1310MT1-6

QTY	ITEM	PART NUMBER	DESCRIPTION
1	1	T1310MT	STANDOFF BRACKET
16	2	H2002KT58G	5/8" HEX NUT, HDG
16	3	H3002KT58G	5/8" LOCK WASHER, HDG
4	4	K1000KT8-534	HALF CLAMP, MEDIUM
16	5	H3012KT58G	5/8" FLAT WASHER, HDG
8	6	K2220KT10I	5/8" THREADED ROD, 10" LONG

T1310MT4-8


QTY	ITEM	PART NUMBER	DESCRIPTION
1	1	T1310MT	STANDOFF BRACKET
16	2	H2002KT58G	5/8" HEX NUT, HDG
16	3	H3002KT58G	5/8" LOCK WASHER, HDG
4	4	K1000KT12	HALF CLAMP, LARGE
16	5	H3012KT58G	5/8" FLAT WASHER, HDG
8	6	K2220KT12I	5/8" THREADED ROD, 12" LONG

T1311MT1-6

QTY	ITEM	PART NUMBER	DESCRIPTION
1	1	T1310MT	STANDOFF BRACKET
24	2	H2002KT58G	5/8" HEX NUT, HDG
24	3	H3002KT58G	5/8" LOCK WASHER, HDG
8	4	K1000KT8-534	HALF CLAMP, MEDIUM
24	5	H3012KT58G	5/8" FLAT WASHER, HDG
8	6	K2220KT12I	5/8" THREADED ROD, 12" LONG

T1311MT4-8

QTY	ITEM	PART NUMBER	DESCRIPTION
1	1	T1310MT	STANDOFF BRACKET
24	2	H2002KT58G	5/8" HEX NUT, HDG
24	3	H3002KT58G	5/8" LOCK WASHER, HDG
8	4	K1000KT12	HALF CLAMP, LARGE
24	5	H3012KT58G	5/8" FLAT WASHER, HDG
8	6	K2220KT15I	5/8" THREADED ROD, 15" LONG



3431 Novis Point Acworth, GA 30101
(888) 439-0500 (770) 974-5100 fax

STANDOFF BRACKET

DRAWING NO: T1310MT/T1311MT

REV: SHEET 1 OF 1

DRAWN KAA	DATE 8/2/09	CHECKED	DATE
--------------	----------------	---------	------