

Steel and Mounts



Accessories



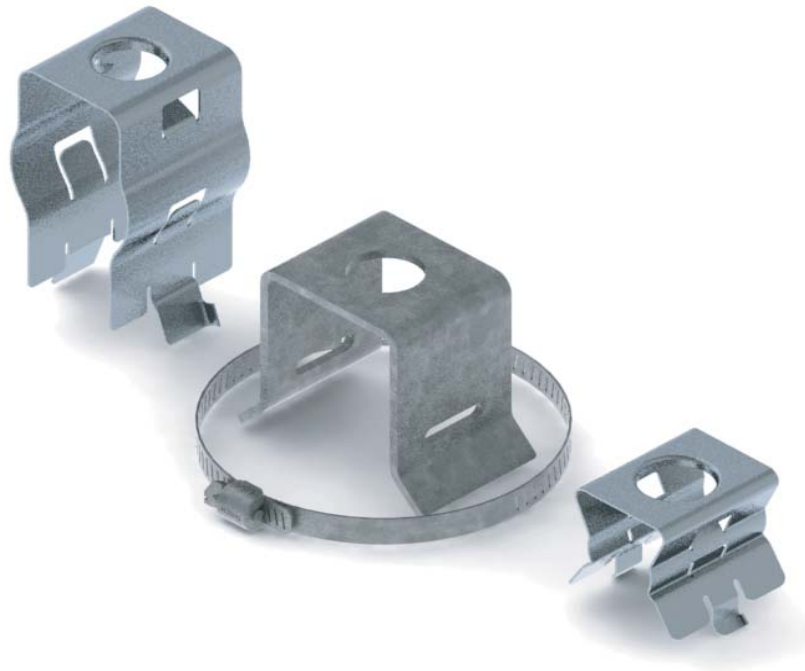
Grounding



Safety

# T1421KTA

## Civil Grounding Support Kit



### Mechanical Specifications

Installation Torque, maximum	15.0 ft lb
Installation Torque, minimum	11.0 ft lb
Material Thickness	0.105 in   2.667 mm
Maximum Loading	Triple stack, 1-5/8" cable
Mounting	3/4" in through hole

### General Specifications

Adapter Type	Angle adapter
Material Type	Stainless steel
Package Quantity	10

### Packed Dimensions

Length	1.00 in		25.40 mm
Width	0.88 in		22.23 mm
Height	2.00 in		50.80 mm
Aprox. Weight	0.40 lb		0.18 Kg

### Products Specifications

Unit: Sold as complete kit