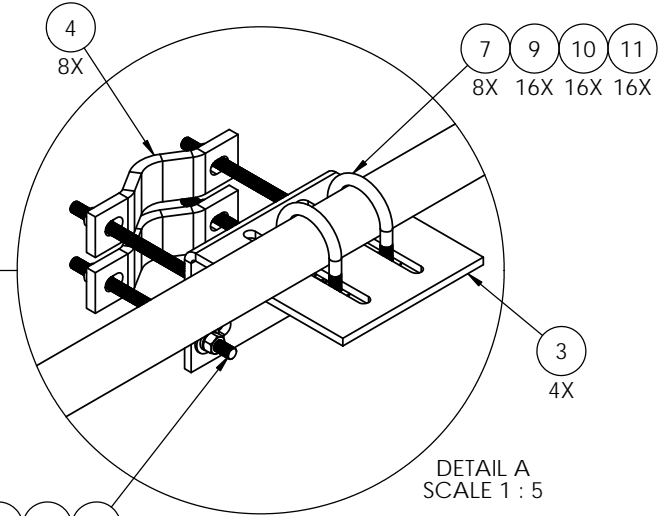
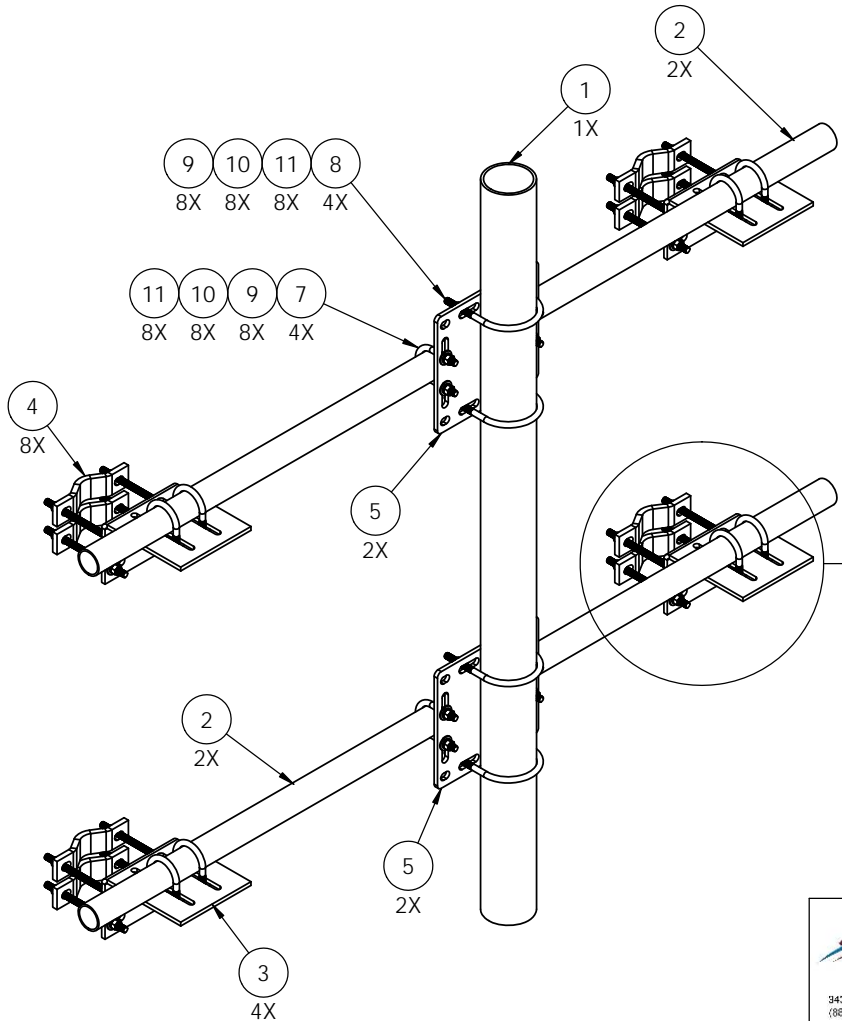



ITEM NO.	PART NUMBER	DESCRIPTION	QTY.
1	P1500KT6	4.50" OD Pipe, 72" Long	1
2	P1000KT7	2-3/8" OD Pipe, 84" Long	2
3	K1145KT1	Slider Plate	4
4	K1000KT8-534	Half Clamp, Medium 5-3/4" Center	8
5	K1710KT	Cross pipe plate, 2.5"-3.5"/3.5"-4.5"	2
6	K2120KT9I	Threaded rod 1/2" x 9", HDG	16
7	H7941KT4	U-Bolt, 1/2-13; 4" Lng; 2-1/2"IL x 2" Thd; HDG	12
8	H7940KT5	U-Bolt, 1/2-13; 6-13/16" Lng; 4-9/16" IL; 3" Thd; HDG	4
9	H3012KT12GSAE	Flat washer, 1/2", SAE (A325), HDG	64
10	H3002KT12G	Lock washer, 1/2" HDG	64
11	H2002KT12GA3	Nut, 1/2" HH, HDG (A325)	64



 <p>KENWOOD TELECOM</p> <p>3421 Novia Point, Acworth, GA 30101 (868) 438-0500 (770) 974-5100 fax</p> <p>PROPRIETARY AND CONFIDENTIAL THE INFORMATION CONTAINED IN THIS DRAWING IS THE SOLE PROPERTY OF KENWOOD TELECOM. ANY REPRODUCTION IN PART OR AS A WHOLE WITHOUT THE WRITTEN PERMISSION OF KENWOOD TELECOM IS PROHIBITED.</p>	UNLESS OTHERWISE SPECIFIED: DIMENSIONS ARE IN INCHES TOLERANCES: FRACTIONAL: ± 1/32 ANGULAR: ± 2° ONE PLACE DECIMAL: ± .06 TWO PLACE DECIMAL: ± .03 THREE PLACE DECIMAL: ± .010	NAME: KAR DATE: 1/5/15	KENWOOD TELECOM		
	INTERPRET GEOMETRIC TOLERANCING PER: MATERIAL: FINISH: DO NOT SCALE DRAWING	DRAWN: KAR CHECKED: ENG APPR.: MFG APPR.: Q.A.: COMMENTS:	TITLE: <h2 style="text-align: center;">Face mount adaptor, 2 - 5" od.</h2>		
			SIZE: B	DWG. NO.: T1607KT72	REV:
			SCALE: 1:10 FINISHED WEIGHT: 222.88		SHEET 1 OF 1