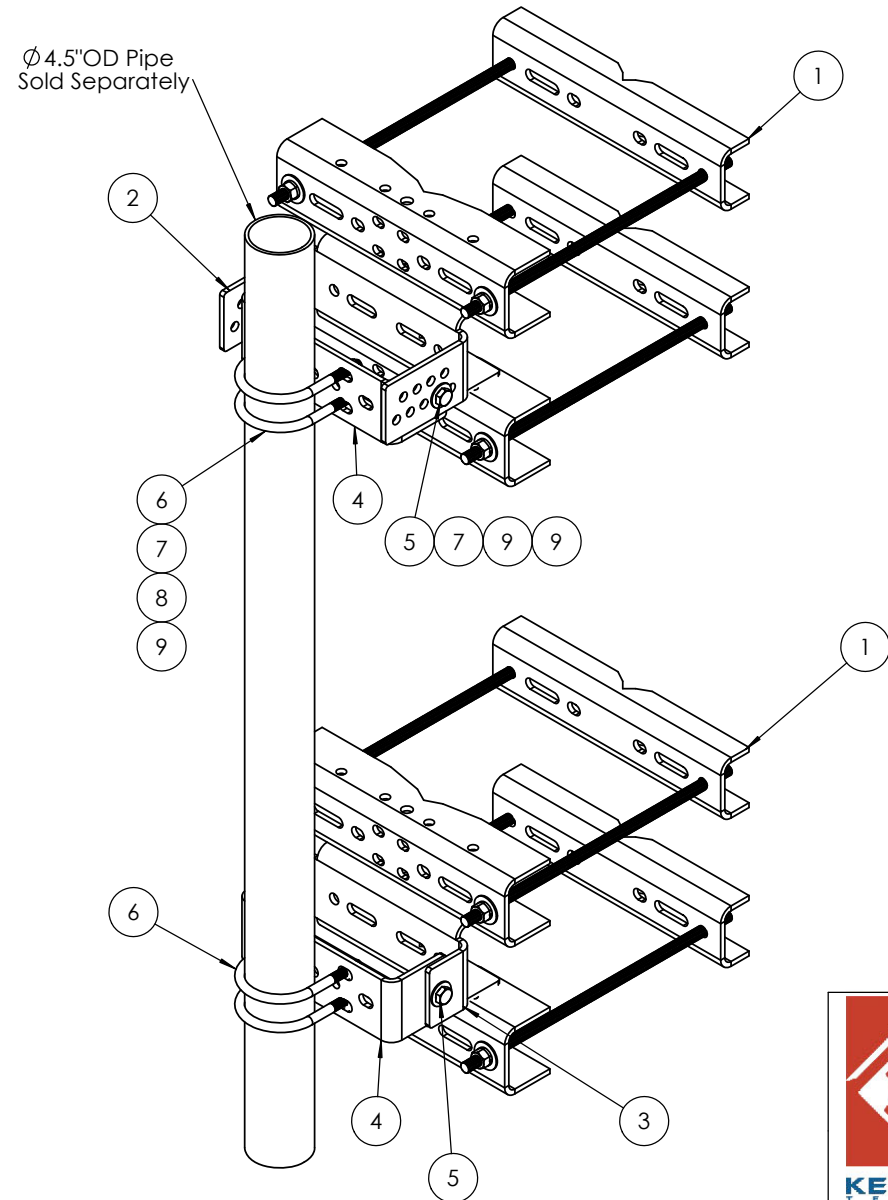


Ø 4.5" OD Pipe
Sold Separately



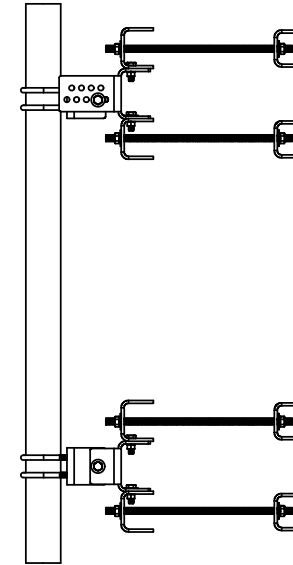
ITEM NO.	PART NUMBER	DESCRIPTION	QTY.
1	K1704KTL4A	Large Leg Clamp Adaptor, up to 16"	1
2	K1672KT-01F	Leg Channel Top Clamp, Formed	1
3	K1672KT-03F	Leg Channel Bottom Clamp, Formed	1
4	K1672KT-02	Taper Adjustment Connector	2
5	H1029KT214GA3	Bolt, 5/8"x2-1/4" (A325) HH, HDG	4
6	H7941KT1	U-Bolt, 5/8-11; 7" Lng; 4-5/8" IL; 3" Thd; HDG	4
7	H3012KT58GSA3	Flat washer, 5/8", SAE (A325), HDG	12
8	H3002KT58G	Lock washer, 5/8", HDG	12
9	H2002KT58GA3	Nut, 5/8"HH, HDG (A325)	12

Fits Leg:

Round: up to 16" OD

90 deg: up to 12"

60 deg: up to 16"



UNLESS OTHERWISE SPECIFIED:
DIMENSIONS ARE IN INCHES
TOLERANCES:
FRACTIONAL: ± 1/32
ANGULAR: ± 2°
ONE PLACE DECIMAL: ± .06
TWO PLACE DECIMAL: ± .03
THREE PLACE DECIMAL: ± .010

INTERPRET GEOMETRIC
TOLERANCING PER:

MATERIAL

FINISH

DO NOT SCALE DRAWING

NAME	DATE
DRAWN KAR	2/5/19
CHECKED	
ENG APPR.	
MFG APPR.	

PROPRIETARY AND CONFIDENTIAL

THE INFORMATION CONTAINED IN THIS
DRAWING IS THE SOLE PROPERTY OF
KENWOOD TELECOM. ANY
REPRODUCTION IN PART OR AS A
WHOLE
WITHOUT THE WRITTEN PERMISSION OF
KENWOOD TELECOM IS
PROHIBITED.



KENWOOD TELECOM

TITLE:

Pipe Mount Taper Adjustment
Large Leg, HD, Up to 16" OD

SIZE	DWG. NO.	REV
B	T1704KTL6A	-

SCALE: 1:8 FINISHED WEIGHT: 267.18 SHEET 1 OF 1