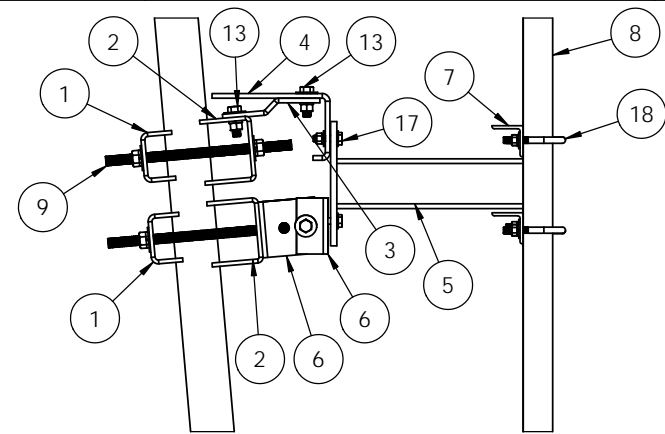




ITEM NO.	PART NUMBER	DESCRIPTION	QTY.
1	K1704KT-05	Channel-inner sector frame	2
2	K1690KT-03	Channel for Sector Frame	2
3	K1704KT-01	Z-Fitting, Taper Adjustment, HDG	1
4	K1704KT-02	Slider Plate, Taper Adjustment	1
5	K1511KT16	Extension arm for platform, 16"	1
6	K1691KT-11	Clip angle for hinge Sector Frame	4
7	K1760KT-01	Angle, 2.5" x 2.5" x 26" with slots	2
8	P1000KT8	2-3/8" OD Pipe, 96" Long	2
9	K2320KT18i	Threaded rod 3/4"x18", HDG	4
10	H3012KT34GSA3	Flat washer, 3/4", SAE (A325), HDG	8
11	H3002KT34G	Lock washer, 3/4", HDG	8
12	H2002KT34GA3	Nut, 3/4" HH, HDG (A325)	8
13	H1029KT2GA3	Bolt, 5/8"x2" (A325) HH, HDG	6
14	H3012KT58GSA3	Flat washer, 5/8", SAE (A325), HDG	6
15	H3002KT58G	Lock washer, 5/8", HDG	6
16	H2002KT58GA3	Nut, hex heavy 5/8" HDG A325	6
17	H1026KT2GA3	Bolt, 1/2" x 2" (A325) HDG	8
18	H7941KT4	U-Bolt, 1/2-13; 4" Lng; 2-1/2"IL x 2" Thd; HDG	4
19	H3012KT12GSAE	Flat washer, 1/2", SAE (A325), HDG	24
20	H3002KT12G	Lock washer, 1/2" HDG	16
21	H2002KT12GA3	Nut, 1/2" HH, HDG (A325)	16



 <p><b>KENWOOD TELECOM</b> 3431 Novis Pointe Acworth, Ga 30101 (770) 975-0500 office, (770) 974-5100 fax</p>	<b>UNLESS OTHERWISE SPECIFIED:</b> DIMENSIONS ARE IN INCHES TOLERANCES: FRACTIONAL: ± 1/32 ANGULAR: ± 2° ONE PLACE DECIMAL: ± .06 TWO PLACE DECIMAL: ± .03 THREE PLACE DECIMAL: ± .010 INTERPRET GEOMETRIC TOLERANCING PER:		NAME: KAR DATE: 8/3/16	 <b>KENWOOD TELECOM</b> TITLE: <h3>Stand off arm kit, 16" w/(2)96" pipe</h3>	
	MATERIAL: FINISH:		DRAWN: KAR CHECKED: ENG APPR.: MFG APPR.:		SIZE: <b>B</b> DWG. NO.: <b>T1760KT16-296</b> SCALE: 1:10 FINISHED WEIGHT: 196.86
	DO NOT SCALE DRAWING		<b>PROPRIETARY AND CONFIDENTIAL</b> THE INFORMATION CONTAINED IN THIS DRAWING IS THE SOLE PROPERTY OF KENWOOD TELECOM. ANY REPRODUCTION IN PART OR AS A WHOLE WITHOUT THE WRITTEN PERMISSION OF KENWOOD TELECOM IS PROHIBITED.		REV:
					SHEET 1 OF 1