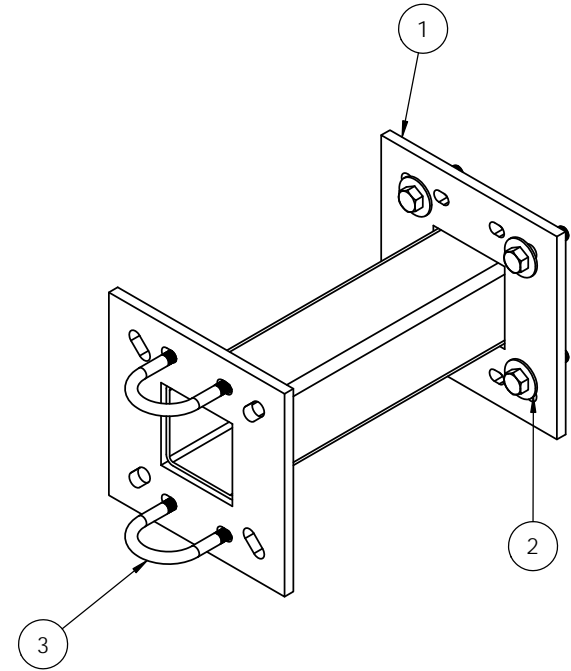
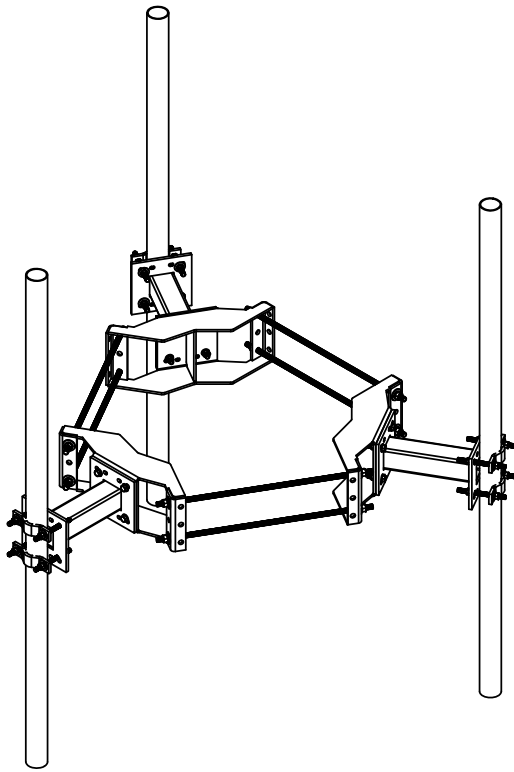




8 7 6 5 4 3 2 1

ITEM NO.	PART NUMBER	DESCRIPTION	QTY.
1	K1511KT16	Extension arm for platform, 16"	1
2	K1029KT2-4	A325 5/8"x2" Bolt Kit (4 ea)	1
3	K7941KT4-2	U-bolt kit, 2-3/8" OD pipe, (2 U-bolt)	1



T1760KT16A EPA RATING

Mount will support a maximum EPA of 11.25 ft² per sector/mount face at a windspeed of 150mph (3-sec gust, exposure C) at a height above ground (AGL) of 200 ft. IAW ANSI/TIA-222-G.

 3431 Novis Pointe Acworth, Ga 30101 (770) 975-0500 office, (770) 974-5100 fax	UNLESS OTHERWISE SPECIFIED: DIMENSIONS ARE IN INCHES TOLERANCES: FRACTIONAL: ± 1/32 ANGULAR: ± 2° ONE PLACE DECIMAL: ± .06 TWO PLACE DECIMAL: ± .03 THREE PLACE DECIMAL: ± .010	NAME: KAR DATE: 12/19/16	 TITLE: Extension arm 16" for platform/t-arm
	INTERPRET GEOMETRIC TOLERANCING PER:	PROPRIETARY AND CONFIDENTIAL	
	MATERIAL: FINISH:	THE INFORMATION CONTAINED IN THIS DRAWING IS THE SOLE PROPERTY OF KENWOOD TELECOM. ANY REPRODUCTION IN PART OR AS A WHOLE WITHOUT THE WRITTEN PERMISSION OF KENWOOD TELECOM IS PROHIBITED.	
	DO NOT SCALE DRAWING	SIZE: B DWG. NO.: T1760KT16A SCALE: 1:4 FINISHED WEIGHT: 37.38	

8 7 6 5 4 3 2 1

D
C
B
A

D
C
B
A