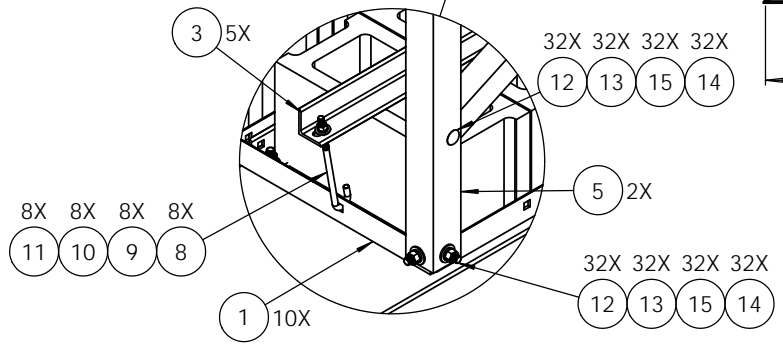
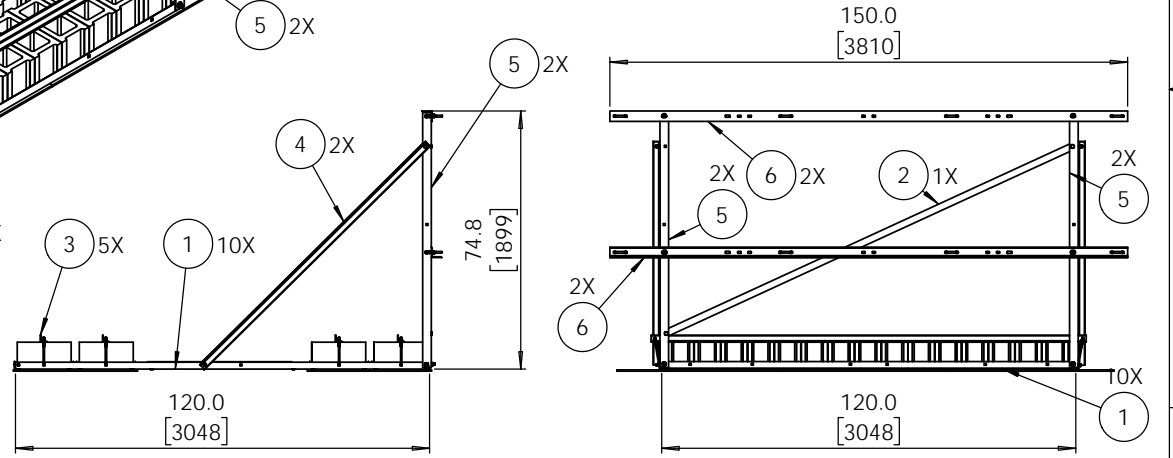


ITEM NO.	PART NUMBER	DESCRIPTION	QTY.
1	K1910KT-01	Kicker/Base Angle	10
2	K1910KT-02	Kicker/Base Angle	1
3	K1910KT-03	Kicker/Base Angle	5
4	K1915KT-04	Side Kicker Angle	2
5	K1915KT-01	Vertical Angle	2
6	K0070KT12-TEMP	Face angle, 12.5° (Heavy 5)	2
7	K7941KT4-2	U-bolt kit, 2-3/8" OD pipe, (2 U-bolt)	4
8	K9925KT	J-bolt, 3/8", 8"long w/6-1/2" threads	8
9	H3012KT38G	Flat Washer, 3/8", HDG	8
10	H3002KT38G	Lock Washer, 3/8", HDG	8
11	H2002KT38G	Nut, hex heavy 3/8", HDG	8
12	H1026KT114CB	1/2" x 1-1/4" Carriage Bolt	32
13	H3012KT12GSAE	Flat washer, hardened, 1/2", SAE, HDG	32
14	H2002KT12GA3	Nut, hex heavy 1/2" HDG A325	32
15	H3002KT12G	Lock washer, 1/2" HDG	32
16	T9950KT	Rubber Mat, 18" x 48"	13



UNLESS OTHERWISE SPECIFIED:  
 DIMENSIONS ARE IN INCHES  
 TOLERANCES:  
 FRACTIONAL: ± 1/32  
 ANGULAR: ± 2°  
 ONE PLACE DECIMAL: ± .06  
 TWO PLACE DECIMAL: ± .03  
 THREE PLACE DECIMAL: ± .010

INTERPRET GEOMETRIC TOLERANCING PER:  
 MATERIAL:  
 FINISH:  
 DO NOT SCALE DRAWING

NAME: KAR  
 DATE: 6/5/17  
 CHECKED:  
 ENG APPR.:  
 MFG APPR.:

PROPRIETARY AND CONFIDENTIAL

THE INFORMATION CONTAINED IN THIS DRAWING IS THE SOLE PROPERTY OF KENWOOD TELECOM. ANY REPRODUCTION IN PART OR AS A WHOLE WITHOUT THE WRITTEN PERMISSION OF KENWOOD TELECOM IS PROHIBITED.

**KENWOOD TELECOM**

TITLE:  
**Rooftop Mount, 10' x 10' w/12' Face**

SIZE: **B** DWG. NO.: **T1910KT12X** REV:

SCALE: 1:25 FINISHED WEIGHT: 591.45 SHEET 1 OF 1