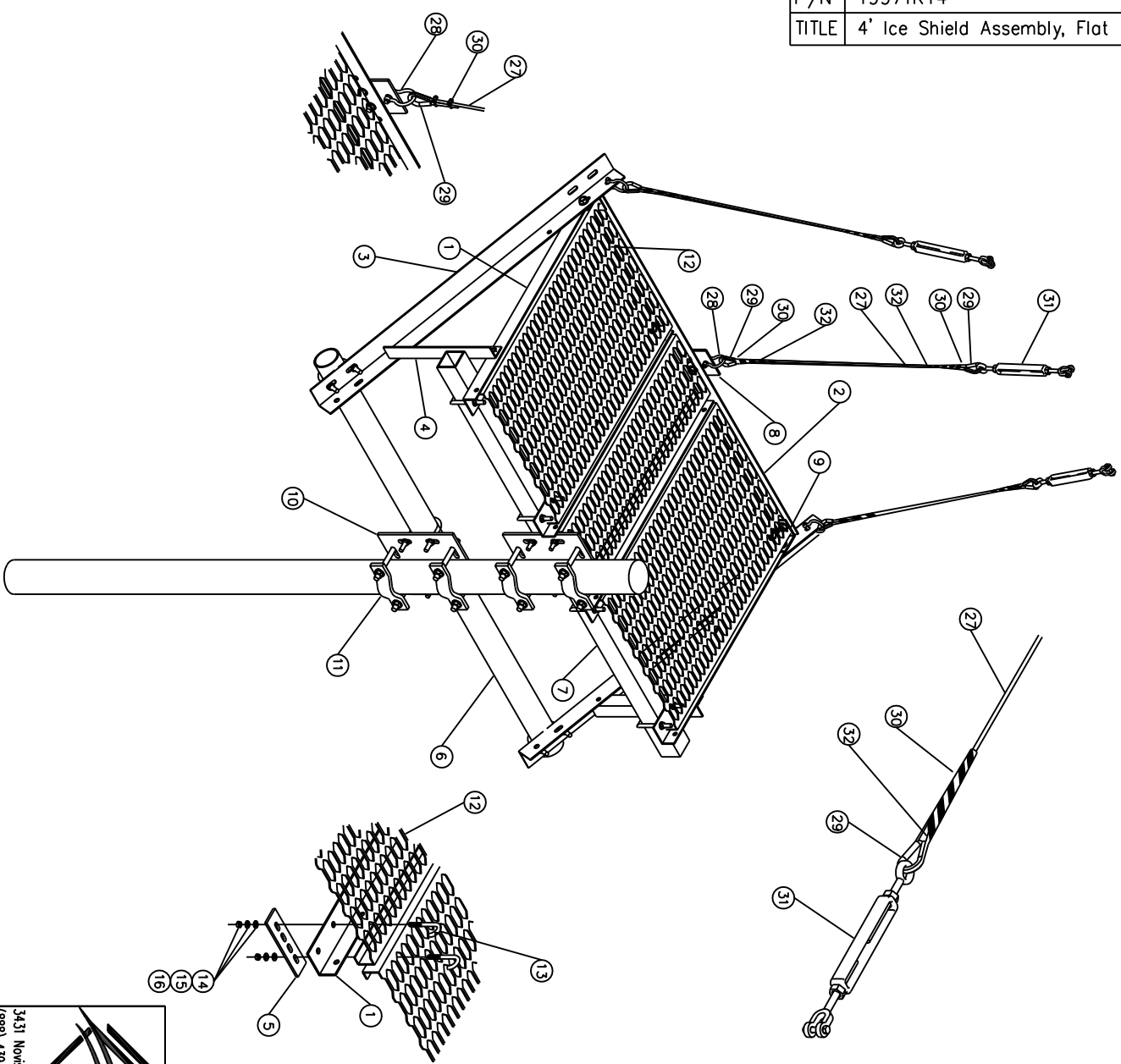



P/N	T9971KT4
TITLE	4' Ice Shield Assembly, Flat



QTY	ITEM	PART NUMBER	DESCRIPTION
4	1	K9970KT-45	Angle, Gripstrut, 38" Long
1	2	K9970KT-40	Angle, Front, 63" Long
2	3	K9970KT-41	Angle, Side Kicker, 50.5" Long
2	4	K9970KT-44	Angle, Side Kicker Strut, 17" Long
2	5	K9921KT	Plate, Round Member Attachment
1	6	P1200KT6	Pipe, 3.5"OD x 6" HDG
1	7	P1450KT6	Sq Tube, 72" Long
1	8	K9970KT-94	Plate-Guy Wire, 4.5" Plate
2	9	K9970KT-95	Corner Clip Angle, 3 x 3
2	10	K1710KT	Cross Pipe Plate
4	11	K1000KT8-534	Half Clamp, Medium
2	12	T3900KT12	Grating, 24" x 2" x 36" Long
1	*	T3902KT12L	Grating, 12" x 2" x 36" Long
16	13	H7826KT4	J-BOLT-3/8"
16	14	H2002KT38G	3/8" HEX NUT
16	15	H3002KT38G	3/8" LOCK WASHER
16	16	H3012KT38G	3/8" FLAT WASHER
8	17	H7940KT15SQ	1/2" Sq U-Bolt for 3" Sq Tube, Grade 5
6	18	H7942KT6	1/2" x 3.625" 6" U-Bolt, w/3" Thread
15	19	H1026KT112GA3	Bolt, 1/2" x 1-1/2" (A325) HH HDG
29	20	H2002KT12GA3	Nut, Hex, 1/2" HDG
29	21	H3012KT12GSAE	Flat Washer, 1/2" HDG
29	22	H3002KT12G	Lock Washer, 1/2" HDG
8	23	K2220KT8I	Threaded Rod, 5/8" x 8", HDG
16	24	H2002KT58G	Nut, Hex, 5/8" HDG
16	25	H3012KT58GSA3	Flat Washer, 5/8" HDG
16	26	H3002KT58G	Lock Washer, 5/8" HDG
100'	27	T9988MF	Guy Wire
3	28	T9012KT38	Shackle
6	29	T9003KT1516	Thimble
12	30	T9003KT1/4	1/4" Dead End Grip for EHS Guy
3	31	T9000KT12-JE12	Jaw/Eye Turnbuckle
6	32	T9004KT14	End Sleeve for 1/4" Cable 1/pk

Weight: 305 lbs

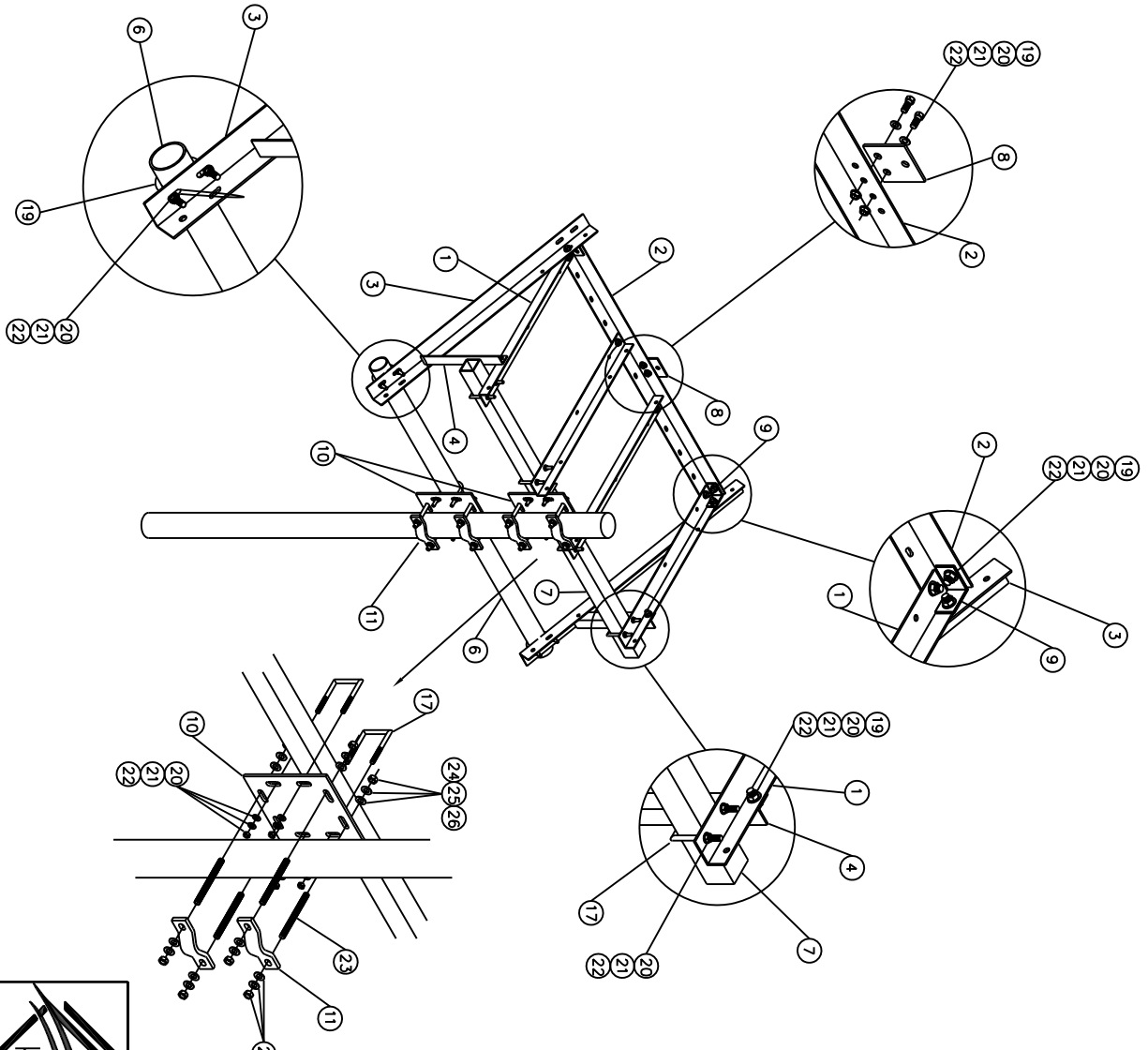


KENWOOD
TELECOM


3431 Notts Point Acworth, GA 30101
(888) 439-0500 (770) 974-5100 fax

DRAWN KAA	DATE 1/11/10	CHECKED	DATE
TITLE 4' Ice Shield Assembly Flat Design			
DRAWING NO T9971KT4		REV	SHEET 1 OF 3

P/N	T9971KT4
TITLE	4' Ice Shield Assembly, Flat



QTY	ITEM	PART NUMBER	DESCRIPTION
4	1	K9970KT-45	Angle, Gripstrut, 3/8" Long
1	2	K9970KT-40	Angle, Front, 65" Long
2	3	K9970KT-41	Angle, Side Kicker, 50.5" Long
2	4	K9970KT-44	Angle, Side Kicker Strut, 17" Long
2	5	K9921KT	Plate, Round Member Attachment
1	6	P1200KT6	Pipe, 3.5"OD x 6' HDG
1	7	P1450KT6	Sq Tube, 72" Long
1	8	K9970KT-94	Plate-Guy Wire, 4.5" Plate
2	9	K9970KT-95	Corner Clip Angle, 3 x 3
2	10	K1710KT	Cross Pipe Plate
4	11	K1000KT8-534	Holt Clamp, Medium
2	12	T3900KT12	Grating, 24" x 2" x 36" Long
1	*	T3902KT12L	Grating, 12" x 2" x 36" Long
16	13	H7826KT4	J-BOLT-3/8"
16	14	H2002KT38G	3/8" HEX NUT
16	15	H3002KT38G	3/8" LOCK WASHER
16	16	H3012KT38G	3/8" FLAT WASHER
8	17	H7940KT155Q	1/2" Sq U-Bolt for 3" Sq Tube, Grade 5
6	18	H7942KT6	1/2" x 3.625" 6" U-Bolt, w/3" Thread
15	19	H1026KT112GA3	Bolt, 1/2" x 1-1/2" (A325) HH HDG
29	20	H2002KT12GA3	Nut, Hex, 1/2" HDG
29	21	H3012KT12GSAE	Flot Washer, 1/2" HDG
29	22	H3002KT12G	Lock Washer, 1/2" HDG
8	23	K2220KT6i	Threaded Rod, 5/8" x 8", HDG
16	24	H2002KT58G	Nut, Hex, 5/8" HDG
16	25	H3012KT58GSA3	Flot Washer, 5/8" HDG
16	26	H3002KT58G	Lock Washer, 5/8" HDG
100'	27	T9988MF	Guy Wire
3	28	T9012KT38	Shackle
6	29	T9003KT516	Thimble
12	30	T9003KT1/4	1/4" Dead End Grip for EHS Guy
3	31	T9000KT12-LET2	Jaw/Eye Turnbuckle
6	32	T9004KT14	End Sleeve for 1/4" Coble 1/pk



KENWOOD
TELECOM

3431 Nouis Point Acworth, GA 30101
(888) 439-0500 (770) 974-5100 fax

4' Ice Shield Assembly
Flot Design

DRAWING NO **T9971KT4**

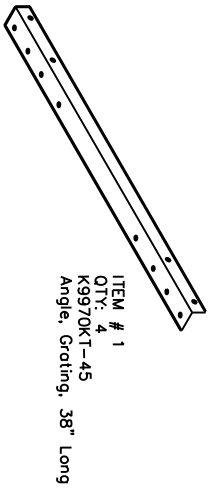
REV **2**
SHEET **2**
OF **3**

DRAWN **KAA** DATE **1/11/10**

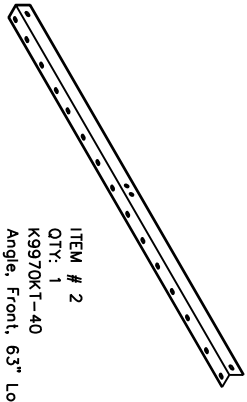
CHECKED _____

DATE _____

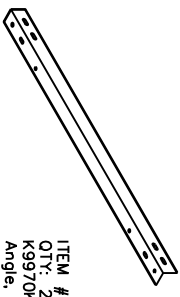
P/N T9971KT8
 TITLE 8' Ice Shield Assembly, Flat



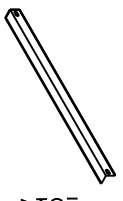
ITEM # 1
 QTY: 4
 K9970KT-45
 Angle, Grating, 38" Long



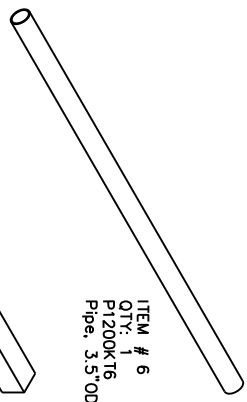
ITEM # 2
 QTY: 1
 K9970KT-40
 Angle, Front, 63" Long



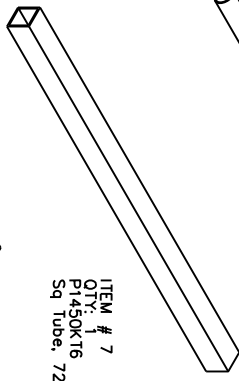
ITEM # 3
 QTY: 2
 K9970KT-41
 Angle, Side Kicker, 50.5" Long



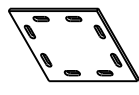
ITEM # 4
 QTY: 5
 K9970KT-44
 Angle, Side Kicker Strut, 17.0" Long



ITEM # 6
 QTY: 1
 P1200KT6
 Pipe, 3.5"OD x 6' HDG



ITEM # 7
 QTY: 1
 P1450KT6
 Sq Tube, 72" Long



ITEM # 10
 QTY: 2
 K1710KT
 Cross Pipe Plate



ITEM # 9
 QTY: 2
 K9970KT-95
 Corner Clip Angle, 3 x 3



ITEM # 8
 QTY: 1
 K9970KT-94
 Plate-Guy Wire, 4.5" Plate



ITEM # 11
 QTY: 4
 K1000KT8-534
 Half Clamp, Medium



ITEM # 5
 QTY: 3
 K9921KT
 Plate-Round Member Attachment

QTY	ITEM	PART NUMBER	DESCRIPTION
4	1	K9970KT-45	Angle, Gripstrut, 38" Long
1	2	K9970KT-40	Angle, Front, 63" Long
2	3	K9970KT-41	Angle, Side Kicker, 50.5" Long
2	4	K9970KT-44	Angle, Side Kicker Strut, 17" Long
2	5	K9921KT	Plate, Round Member Attachment
1	6	P1200KT6	Pipe, 3.5"OD x 6' HDG
1	7	P1450KT6	Sq Tube, 72" Long
1	8	K9970KT-94	Plate-Guy Wire, 4.5" Plate
2	9	K9970KT-95	Corner Clip Angle, 3 x 3
2	10	K1710KT	Cross Pipe Plate
4	11	K1000KT8-534	Half Clamp, Medium
2	12	T3900KT12	Grating, 24" x 2" x 36" Long
1	*	T3902KT12L	Grating, 12" x 2" x 36" Long
16	13	H7826KT4	J-BOLT-3/8"
16	14	H2002KT138G	3/8" HEX NUT
16	15	H3002KT138G	3/8" LOCK WASHER
16	16	H3012KT138G	3/8" FLAT WASHER
8	17	H7940KT115SQ	1/2" Sq U-Bolt for 3" Sq Tube, Grade 5
6	18	H7942KT6	1/2" x 3.625" 6" U-Bolt, w/3" Thread
15	19	H1026KT112GA3	Bolt, 1/2" x 1-1/2" (A325) HH HDG
29	20	H2002KT12GA3	Nut, Hex, 1/2" HDG
29	21	H3012KT12GSAE	Flat Washer, 1/2" HDG
29	22	H3002KT112G	Lock Washer, 1/2" HDG
8	23	K2220KT6I	Threaded Rod, 5/8" x 8", HDG
16	24	H2002KT158G	Nut, Hex, 5/8" HDG
16	25	H3012KT158GSA3	Flat Washer, 5/8" HDG
16	26	H3002KT158G	Lock Washer, 5/8" HDG
100	27	T9988MWF	Guy Wire
3	28	T9012KT138	Shackle
6	29	T9003KT1516	Thimble
12	30	T9003KT1/4	1/4" Dead End Grip for EHS Guy
3	31	T9000KT12-JE12	Jaw/Eye Turnbuckle
6	32	T9004KT14	End Sleeve for 1/4" Cobble 1/pk

3431 Novis Point Acworth, GA 30101
 (888) 439-0500 (770) 974-5100 fax

DRAWING NO: T9971KT4

REV: 3 OF 3

DATE: 1/11/10

CHECKED: _____

DATE: _____

DRAWN: KAA

TITLE: 4' Ice Shield Assembly Flat Design