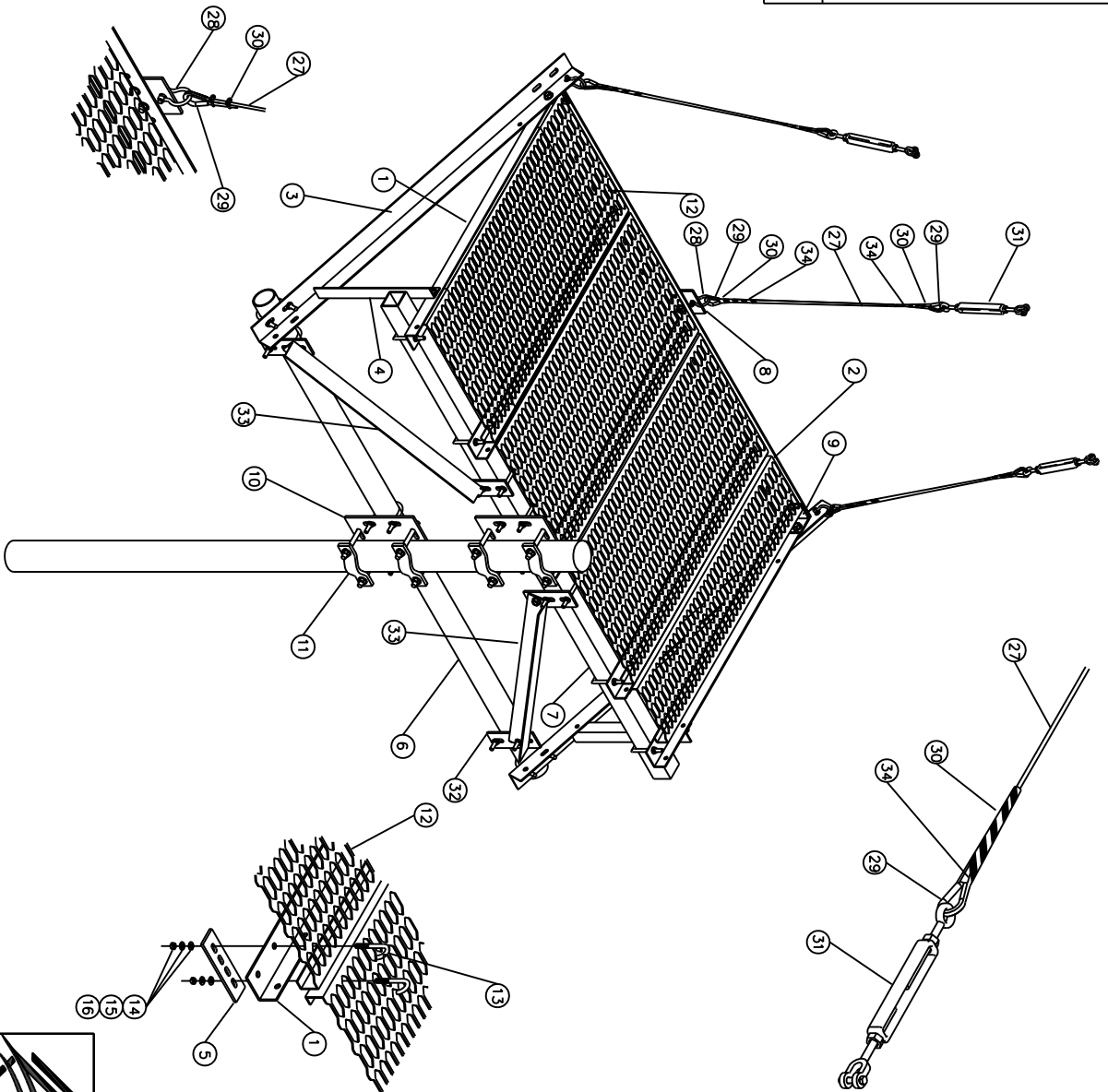


P/N	T9971KT6
TITLE	6' Ice Shield Assembly, Flat



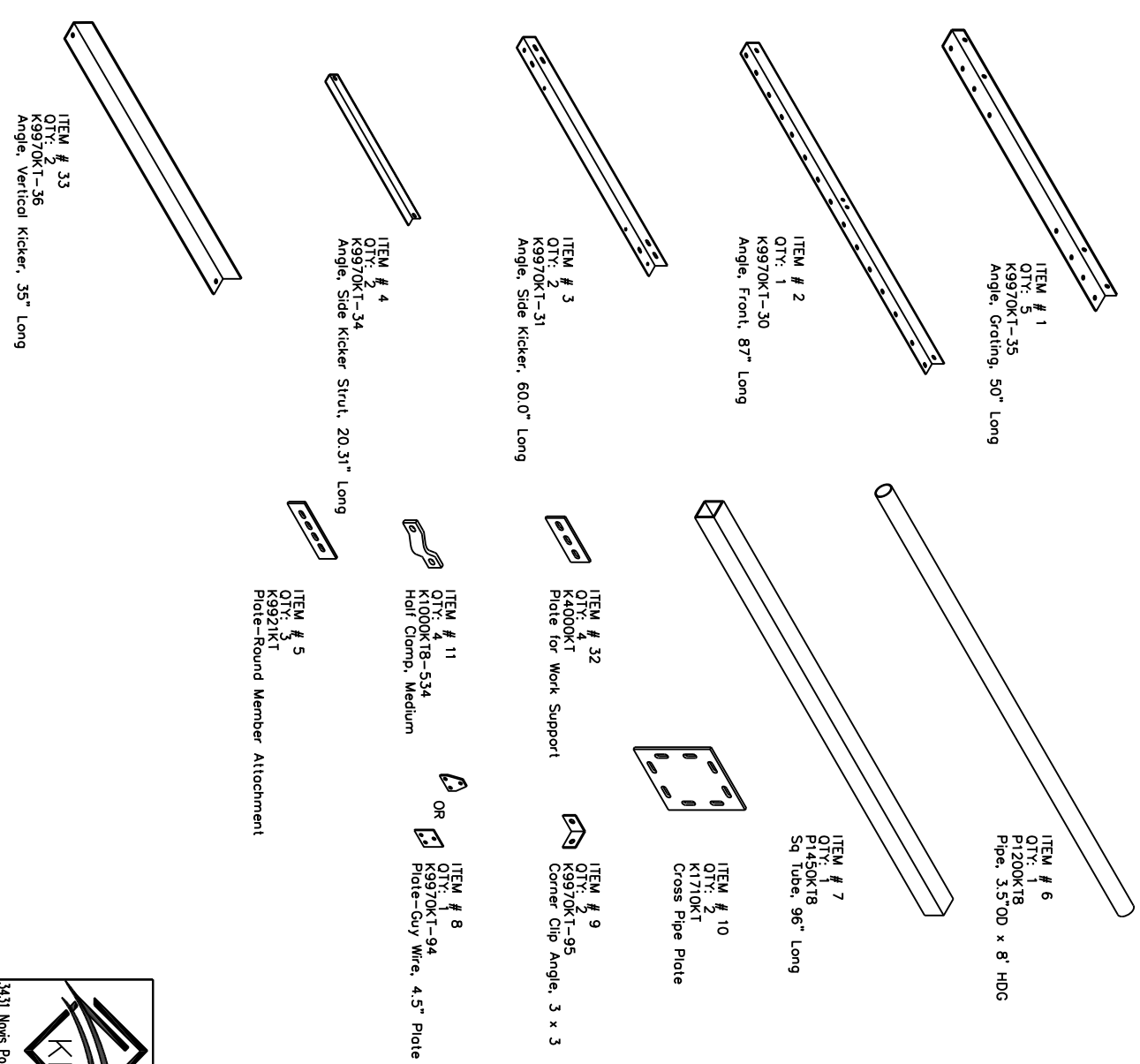
QTY	ITEM	PART NUMBER	DESCRIPTION
5	1	K9970KT-35	Angle, Gripestrut, 50" Long
1	2	K9970KT-30	Angle, Front, 87" Long
2	3	K9970KT-31	Angle, Side Kicker, 55.5" Long
2	4	K9970KT-34	Angle, Side Kicker Strut, 19.75" Long
3	5	K9921KT	Plate, Round Member Attachment
1	6	P1200KT8	Pipe, 3.5"OD x 8" HDG
1	7	P1450KT8	Sq Tube, 96" Long
1	8	K9970KT-94	Plate-Guy Wire, 4.5" Plate
2	9	K9970KT-95	Corner Clip Angle, 3 x 3
2	10	K1710KT	Cross Pipe Plate
4	11	K1000KT8-534	Half Clamp, Medium
3	12	T3900KT10	Grating, 24" x 2" x 48" Long
1	*	T3902KT10L	Grating, 12" x 2" x 48" Long
22	13	H7826KT4	J-BOLT-3/8"
22	14	H2002KT38G	3/8" HEX NUT
22	15	H3002KT38G	3/8" LOCK WASHER
22	16	H3012KT38G	3/8" FLAT WASHER
10	17	H7940KT15SQ	1/2" Sq U-Bolt for 3" Sq Tube, Grade 5
6	18	H7942KT6	1/2" x 3.625" 6" U-Bolt, w/3" Thread
16	19	H1026KT112GA3	Bolt, 1/2" x 1-1/2" (A325) HH HDG
45	20	H2002KT12GA3	Nut, Hex, 1/2" HDG
45	21	H3012KT12GSAE	Flat Washer, 1/2" HDG
45	22	H3002KT12G	Lock Washer, 1/2" HDG
8	23	K2220KT8I	Threaded Rod, 5/8" x 8", HDG
16	24	H2002KT58G	Nut, Hex, 5/8" HDG
16	25	H3012KT58GSA3	Flat Washer, 5/8" HDG
16	26	H3002KT58G	Lock Washer, 5/8" HDG
100*	27	T9988BMF	Guy Wire
3	28	T9012KT38	Shackle
6	29	T9003KT1516	Thimble
12	30	T9013KT1/4	1/4" Dead End Grip for EHS Guy
3	31	T9000KT12-JE12	Jaw/Eye Turnbuckle
4	32	K4000KT	Plate for Work Support
2	33	K9970KT-36	Angle, Vertical Kicker, 35" Long
6	34	T9004KT14	End Sleeve for 1/4" Cable 1/pk

Weight: 432 lbs

3431 Norris Point Acworth, GA 30101  
(888) 439-0500 (770) 974-5100 fax

DRAWN	DATE	CHECKED	DATE
KAA	1/11/10		
TITLE			
6' Ice Shield Assembly Flat Design			
DRAWING NO	REV		SHEET 1
T9971KT6			OF 3

P/N	T9971KT8
TITLE	8' Ice Shield Assembly, Flat



QTY	ITEM	PART NUMBER	DESCRIPTION
5	1	K9970KT-35	Angle, Gripstrut, 50" Long
1	2	K9970KT-30	Angle, Front, 87" Long
2	3	K9970KT-31	Angle, Side Kicker, 55.5" Long
2	4	K9970KT-34	Angle, Side Kicker Strut, 19.75" Long
3	5	K9921KT	Plate, Round Member Attachment
1	6	P1200KT8	Pipe, 3.5"OD x 8' HDG
1	7	P1450KT8	Sq Tube, 96" Long
1	8	K9970KT-94	Plate-Guy Wire, 4.5" Plate
2	9	K9970KT-95	Corner Clip Angle, 3 x 3
2	10	K1710KT	Cross Pipe Plate
4	11	K1000KT8-534	Half Clamp, Medium
3	12	T3900KT10	Grating, 24" x 2" x 48" Long
1	*	T3902KT10L	Grating, 12" x 2" x 48" Long
22	13	H7826KT4	J-BOLT-3/8"
22	14	H2002KT138G	3/8" HEX NUT
22	15	H3002KT138G	3/8" LOCK WASHER
22	16	H3012KT138G	3/8" FLAT WASHER
10	17	H7940KT1550	1/2" Sq U-Bolt for 3" Sq Tube, Grade 5
6	18	H7942KT6	1/2" x 3.625" 6" U-Bolt, w/3" Thread
16	19	H1026KT112GA3	Bolt, 1/2" x 1-1/2" (A325) HH HDG
45	20	H2002KT12GA3	Nut, Hex, 1/2" HDG
45	21	H3012KT12GSAE	Flat Washer, 1/2" HDG
45	22	H3002KT112G	Lock Washer, 1/2" HDG
8	23	K2220KT6I	Threaded Rod, 5/8" x 8", HDG
16	24	H2002KT158G	Nut, Hex, 5/8" HDG
16	25	H3012KT158GSA3	Flat Washer, 5/8" HDG
16	26	H3002KT158G	Lock Washer, 5/8" HDG
100*	27	T9988MF	Guy Wire
3	28	T9012KT138	Shackle
6	29	T9003KT516	Thimble
12	30	T9013KT1/4	1/4" Dead End Grip for EHS Guy
3	31	T9000KT12-JE12	Low/Eye Turnbuckle
4	32	K4000KT	Plate for Work Support
2	33	K9970KT-36	Angle, Vertical Kicker, 35" Long
6	34	T9004KT14	End Sleeve for 1/4" Cable 1/pk

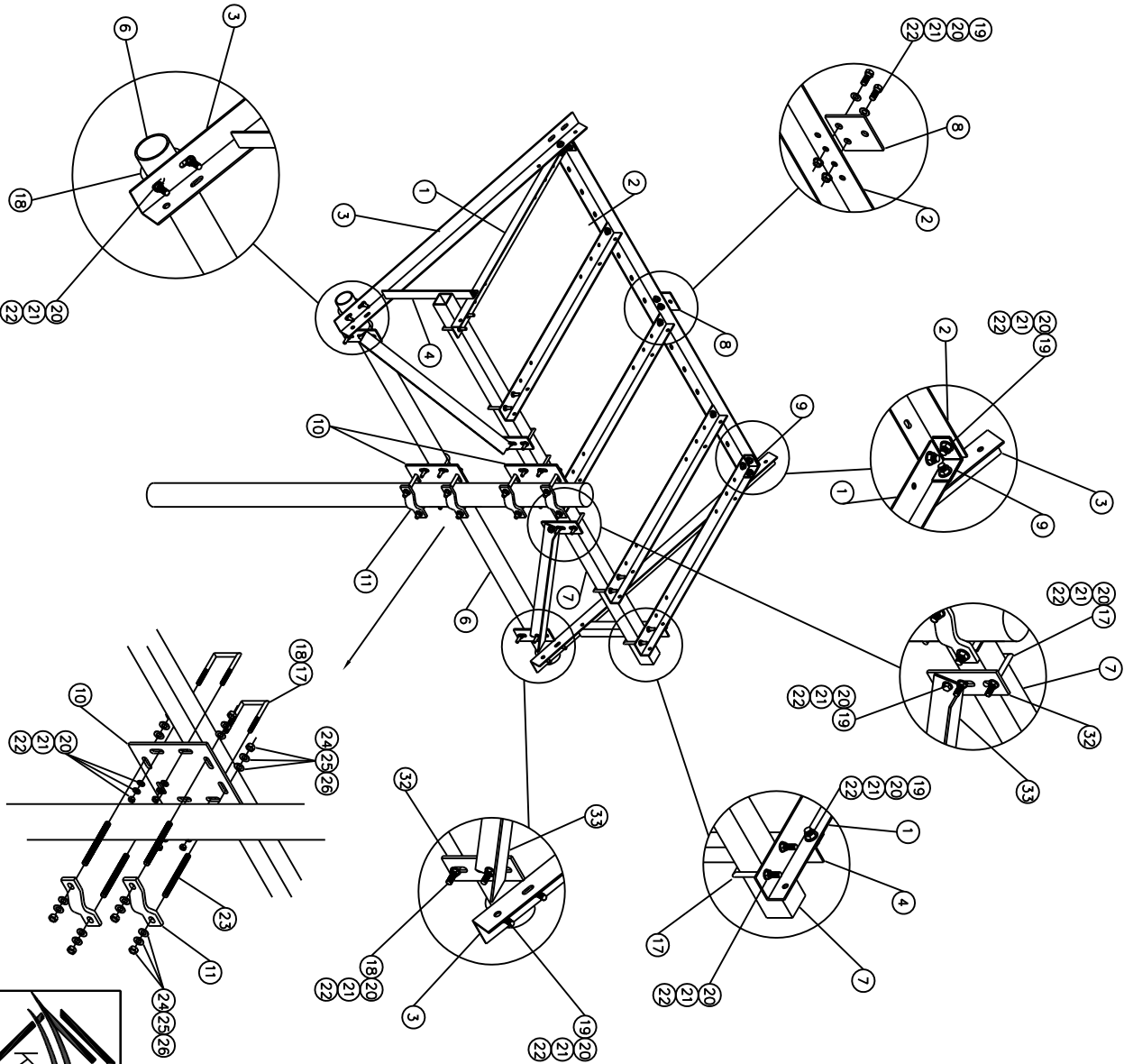


3431 Norris Point Acornth, GA 30101  
(888) 439-0500 (770) 974-5100 fax


DRAWN	DATE	CHECKED	DATE
KA	1/11/10		
TITLE			
6' Ice Shield Assembly Flat Design			

DRAWING NO	REV	SHEET
T9971KT6		3

P/N T9971KT6  
 TITLE 6' Ice Shield Assembly, Flat



QTY	ITEM	PART NUMBER	DESCRIPTION
5	1	K9970KT-35	Angle, Gripstrut, 50" Long
1	2	K9970KT-30	Angle, Front, 87" Long
2	3	K9970KT-31	Angle, Side Kicker, 55.5" Long
2	4	K9970KT-34	Angle, Round Kicker Strut, 19.75" Long
3	5	K9921KT	Plate, Round Member Attachment
1	6	P1200KT8	Pipe, 3.5"OD x 8" HDG
1	7	P1450KT8	Sq Tube, 96" Long
1	8	K9970KT-94	Plate-Guy Wire, 4.5" Plate
2	9	K9970KT-95	Corner Clip Angle, 3 x 3
2	10	K1710KT	Cross Pipe Plate
4	11	K1000KT8-534	Half Clamp, Medium
3	12	T3900KT10	Grating, 24" x 2" x 48" Long
1	*	T3902KT10L	Grating, 12" x 2" x 48" Long
22	13	H7826KT4	J-BOLT-3/8"
22	14	H2002KT38G	3/8" HEX NUT
22	15	H3002KT38G	3/8" LOCK WASHER
22	16	H3012KT138G	3/8" FLAT WASHER
10	17	H7940KT1550	1/2" Sq U-Bolt for 3" Sq Tube, Grade 5
6	18	H7942KT6	1/2" x 3.625" 6" U-Bolt, w/3" Thread
16	19	H1026KT112GA3	Bolt, 1/2" x 1-1/2" (A325) HH HDG
45	20	H2002KT12GA3	Nut Hex, 1/2" HDG
45	21	H3012KT12GSAE	Flat Washer, 1/2" HDG
45	22	H3002KT112G	Lock Washer, 1/2" HDG
8	23	K2220KT8I	Threaded Rod, 5/8" x 8", HDG
16	24	H2002KT38G	Nut Hex, 5/8" HDG
16	25	H3012KT58GSA3	Flat Washer, 5/8" HDG
16	26	H3002KT58G	Lock Washer, 5/8" HDG
100'	27	T9988WF	Guy Wire
3	28	T9012KT138	Shackle
6	29	T9003KT516	Thimble
12	30	T9013KT1/4	1/4" Dead End Grip for EHS Guy
3	31	T9000KT112-JE12	Jaw/Eye Turnbuckle
4	32	K4000KT	Plate for Work Support
2	33	K9970KT-36	Angle, Vertical Kicker, 35" Long
6	34	T9004KT14	End Sleeve for 1/4" Cable 1/pk



3431 Nons Point Acworth, GA 30101  
 (888) 439-0500 (770) 974-5100 fax

DRAWING NO T9971KT6

REV SHEET 2  
 OF 3

DRAWN KAA DATE 1/11/10 CHECKED DATE

TITLE 6' Ice Shield Assembly Flat Design