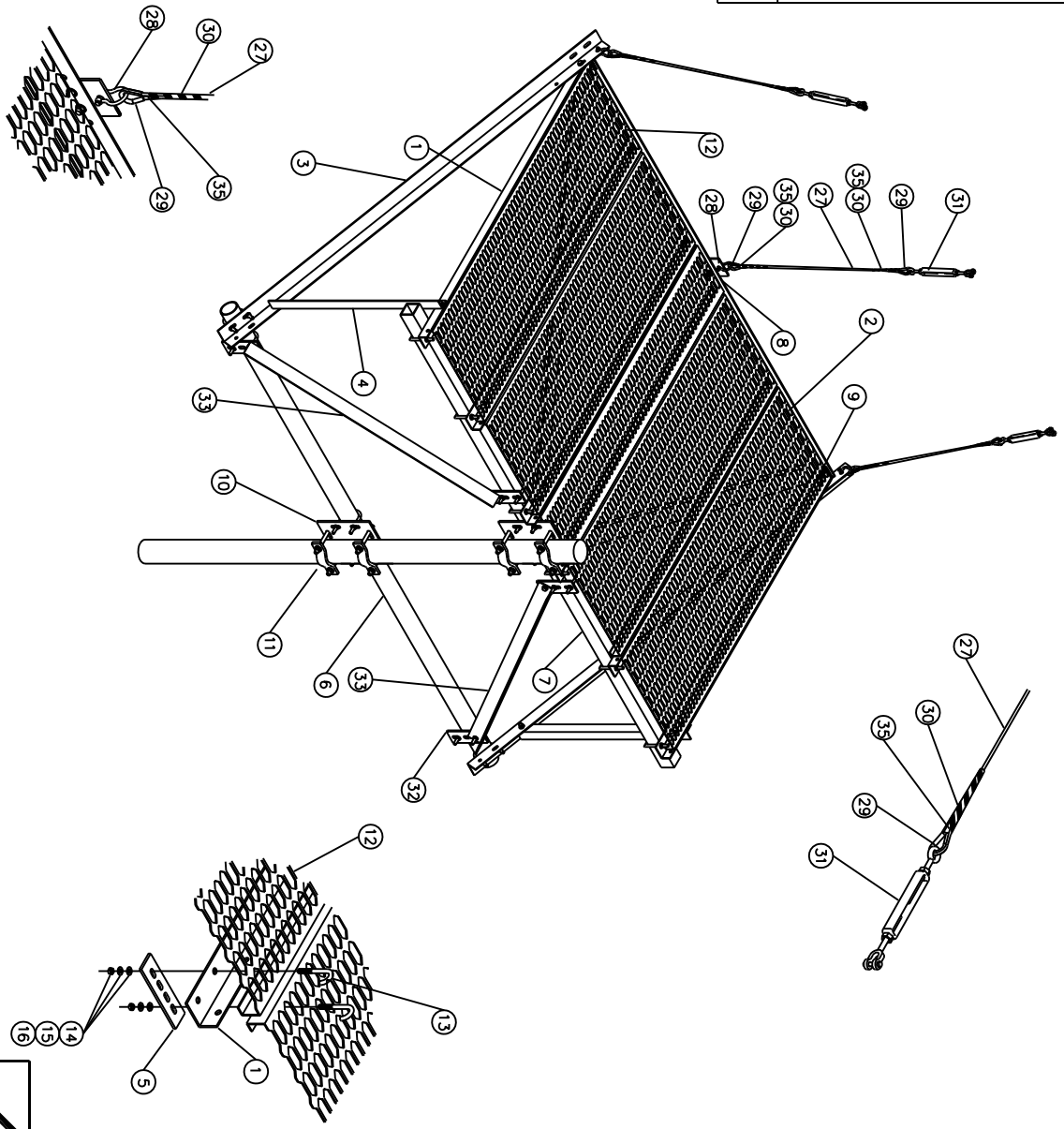



P/N	T9971KT8
TITLE	8' Ice Shield Assembly, Flat



QTY	ITEM	PART NUMBER	DESCRIPTION
6	1	K9970KT-15	Angle, Gripstrut, 74" Long
1	2	K9970KT-20	Angle, Front, 111" Long
2	3	K9970KT-11	Angle, Side Kicker, 92.5" Long
2	4	K9970KT-14	Angle, Side Kicker Strut, 39.0" Long
8	5	K9921KT	Plate, Round Member Attachment
1	6	P1200KT10	Pipe, 3.5" OD x 10' HDG
1	7	P1450KT10	Sq Tube, 120" Long
1	8	K9970KT-94	Plate-Guy Wire, 4.5" Plate
2	9	K9970KT-95	Corner Clip Angle, 3 x 3
2	10	K1710KT	Cross Pipe Plate
4	11	K1000KT8-534	Half Clamp, Medium
4	12	T3900KT12	Grating, 24" x 2" x 72" Long
1	*	T3902KT12L	Grating, 12" x 2" x 72" Long
28	13	H7826KT4	J-BOLT-3/8"
28	14	H2002KT38G	3/8" HEX NUT
28	15	H3002KT38G	3/8" LOCK WASHER
28	16	H3012KT38G	3/8" FLAT WASHER
12	17	H7940KT15SQ	1/2" Sq U-Bolt for 3" Sq Tube, Grade 5
6	18	H7942KT6	1/2" x 3.625" 6" U-Bolt, w/3" Thread
20	19	H1026KT112GA3	Bolt, 1/2" x 1-1/2" (A325) HH HDG
54	20	H2002KT12GA3	Nut, Hex, 1/2" HDG
54	21	H3012KT12GSAE	Lock Washer, 1/2" HDG
54	22	H3002KT12G	Lock Washer, 1/2" HDG
8	23	K2220KT8I	Threaded Rod, 5/8" x 8", HDG
16	24	H2002KT58G	Nut, Hex, 5/8" HDG
16	25	H3012KT58GSA3	Flat Washer, 5/8" HDG
16	26	H3002KT58G	Lock Washer, 5/8" HDG
100'	27	T9988WF	Guy Wire
3	28	T9012KT38	Shackle
6	29	T9003KT516	Thimble
6	30	T9013KT1/4	1/4" Dead End Grip for EHS Guy
3	31	T9000KT12-JE12	Jaw/Eye Turnbuckle
4	32	K4000KT	Plate for Work Support
2	33	K9970KT-26	Angle, Vertical Kicker, 55" Long
2	34	K9970KT-23	Angle, Horizontal Kicker, 80" Long
6	35	T9004KT14	End Sleeve for 1/4" Cable 1/pk

Weight: 753 lbs

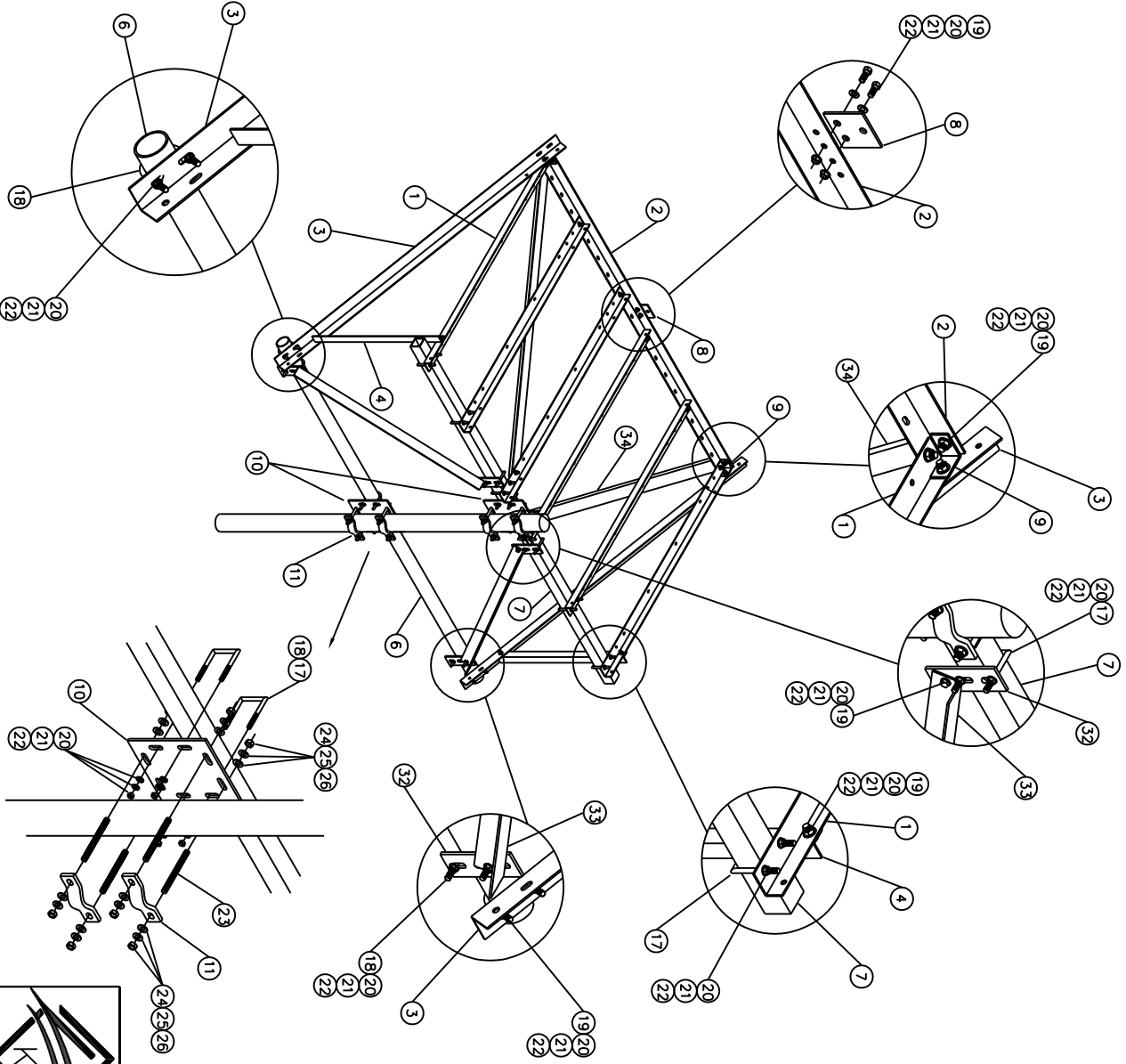


KENWOOD
TELECOM

3431 Nons Point Acworth, GA 30101
(888) 439-0500 (770) 974-5100 fax

DRAWN KAA	DATE 1/11/10	CHECKED	DATE
<p>8' Ice Shield Assembly Flat Design</p>			
DRAWING NO T9971KT8		REV SHEET 1 OF 5	

P/N T9971KT8
 TITLE 8' Ice Shield Assembly, Flat



QTY	ITEM	PART NUMBER	DESCRIPTION
6	1	K9970KT-15	Angle, Gripstrut, 74" Long
1	2	K9970KT-20	Angle, Front, 111" Long
2	3	K9970KT-11	Angle, Side Kicker, 92.5" Long
2	4	K9970KT-14	Angle, Side Kicker Strut, 39.0" Long
8	5	K9921KT	Plate, Round Member Attachment
1	6	P1200KT10	Pipe, 3.5"OD x 10' HDG
1	7	P1450KT10	Sq Tube, 120" Long
1	8	K9970KT-94	Plate-Guy Wire, 4.5" Plate
2	9	K9970KT-95	Corner Clip Angle, 3 x 3
2	10	K1710KT	Cross Pipe Plate
4	11	K1000KT8-534	Half Clamp, Medium
4	12	T3900KT112	Grating, 24" x 2" x 72" Long
1	*	T3902KT12L	Grating, 12" x 2" x 72" Long
28	13	H7826KT4	J-BOLT-3/8"
28	14	H2002KT38G	3/8" HEX NUT
28	15	H3002KT38G	3/8" LOCK WASHER
28	16	H3012KT38G	3/8" FLAT WASHER
12	17	H7940KT155Q	1/2" Sq U-Bolt for 3" Sq Tube, Grade 5
6	18	H7942KT6	1/2" x 3.625" 6" U-Bolt, w/3" Thread
20	19	H1026KT112GA3	Bolt, 1/2" x 1-1/2" (A325) HH HDG
54	20	H2002KT12GA3	Nut, Hex, 1/2" HDG
54	21	H3012KT12GSAE	Flat Washer, 1/2" HDG
54	22	H3002KT112G	Lock Washer, 1/2" HDG
8	23	K2220KT8I	Threaded Rod, 5/8" x 8", HDG
16	24	H2002KT158G	Nut, Hex, 5/8" HDG
16	25	H3012KT158GSA3	Flat Washer, 5/8" HDG
16	26	H3002KT158G	Lock Washer, 5/8" HDG
100'	27	T9988WF	Guy Wire
3	28	T9012KT138	Shackle
6	29	T9003KT1516	Thimble
3	30	T9013KT1/4	1/4" Dead End Grip for EHS Guy
3	31	T9000KT112-JE12	Jaw/Eye Turnbuckle
4	32	K4000KT	Plate for Work Support
2	33	K9970KT-26	Angle, Vertical Kicker, 55" Long
2	34	K9970KT-23	Angle, Horizontal Kicker, 80" Long
6	35	T9004KT14	End Sleeve for 1/4" Cable 1/pk



3431 Novis Point Acworth, GA 30101
 (888) 439-0500 (770) 974-5100 for

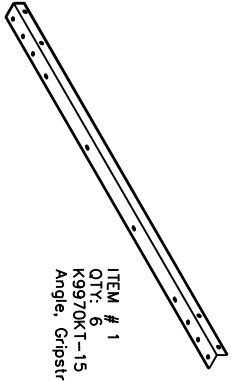
8' Ice Shield Assembly
 Flat Design

DRAWING NO T9971KT8

DATE	CHECKED	DATE
1/11/10		

REV SHEET 2
 OF 3

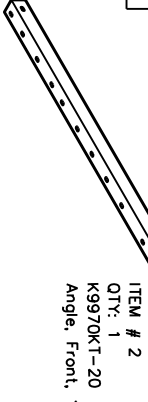
P/N	T9971KT8
TITLE	8' Ice Shield Assembly, Flat



ITEM # 1
QTY: 6
K9970KT-15
Angle, Gripstrut, 74" Long



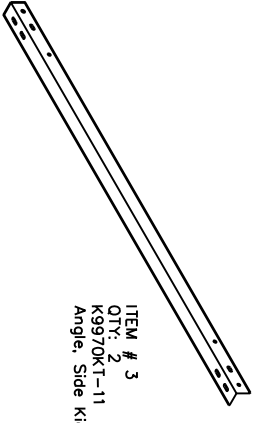
ITEM # 6
QTY: 1
P1200KT10
Pipe, 3.5"OD x 10" HDG



ITEM # 2
QTY: 1
K9970KT-20
Angle, Front, 111" Long



ITEM # 7
QTY: 1
P1450KT10
Sq Tube, 120" Long



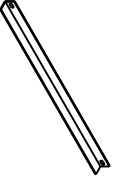
ITEM # 3
QTY: 2
K9970KT-11
Angle, Side Kicker, 92.5" Long



ITEM # 32
QTY: 4
K1000KT
Plate for Work Support



ITEM # 9
QTY: 2
K9970KT-95
Corner Clip Angle, 3 x 3



ITEM # 4
QTY: 2
K9970KT-14
Angle, Side Kicker Strut, 39.0" Long



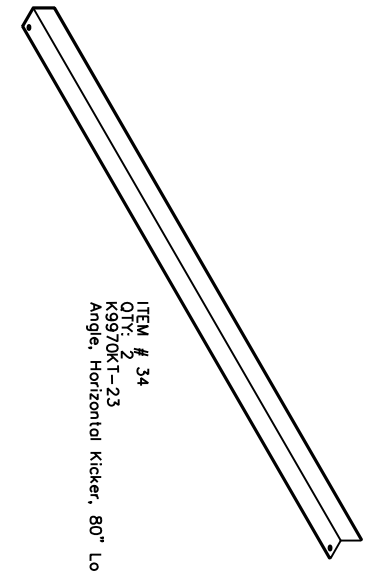
ITEM # 11
QTY: 4
K1000KT8-534
Half Clamp, Medium



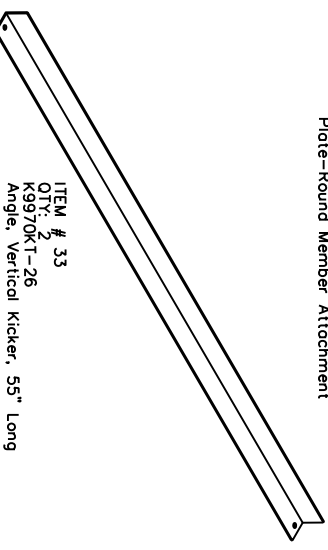
ITEM # 8
QTY: 4
K9970KT-94
Plate-Guy Wire, 4.5" Plate



ITEM # 5
QTY: 8
K9921KT
Plate-Round Member Attachment



ITEM # 34
QTY: 2
K9970KT-23
Angle, Horizontal Kicker, 80" Long



ITEM # 33
QTY: 2
K9970KT-26
Angle, Vertical Kicker, 55" Long

QTY	ITEM	PART NUMBER	DESCRIPTION
6	1	K9970KT-15	Angle, Gripstrut, 74" Long
1	2	K9970KT-20	Angle, Front, 111" Long
2	3	K9970KT-11	Angle, Side Kicker, 92.5" Long
2	4	K9970KT-14	Angle, Side Kicker Strut, 39.0" Long
8	5	K9921KT	Plate, Round Member Attachment
1	6	P1200KT10	Pipe, 3.5"OD x 10" HDG
1	7	P1450KT10	Sq Tube, 120" Long
1	8	K9970KT-94	Plate-Guy Wire, 4.5" Plate
2	9	K9970KT-95	Corner Clip Angle, 3 x 3
2	10	K1710KT	Cross Pipe Plate
4	11	K1000KT8-534	Half Clamp, Medium
4	12	T3900KT12	Grating, 24" x 2" x 72" Long
1	*	T3902KT12L	Grating, 12" x 2" x 72" Long
28	13	H7826KT4	J-BOLT-3/8"
28	14	H2002KT38G	3/8" HEX NUT
28	15	H3002KT38G	3/8" LOCK WASHER
28	16	H3012KT38G	3/8" FLAT WASHER
12	17	H17940KT1550	1/2" Sq U-Bolt for 3" Sq Tube, Grade 5
6	18	H17942KT6	1/2" x 3.625" 6" U-Bolt, w/3" Thread
20	19	H1026KT112GA3	Bolt, 1/2" x 1-1/2" (A325) HH HDG
54	20	H2002KT12GA3	Nut, Hex, 1/2" HDG
54	21	H3012KT12GSAE	Flat Washer, 1/2" HDG
54	22	H3002KT12G	Lock Washer, 1/2" HDG
8	23	K2220KT8i	Threaded Rod, 5/8" x 8", HDG
16	24	H2002KT58G	Nut, Hex, 5/8" HDG
16	25	H3012KT58GSA3	Flat Washer, 5/8" HDG
16	26	H3002KT58G	Lock Washer, 5/8" HDG
100*	27	T9988MF	Guy Wire
3	28	T9012KT38	Shackle
6	29	T9003KT516	Thimble
6	30	T9013KT1/4	1/4" Dead End Grip for EHS Guy
3	31	T9000KT12-LET2	Jaw/Eye Turnbuckle
4	32	K4000KT	Plate for Work Support
2	33	K9970KT-26	Angle, Vertical Kicker, 55" Long
2	34	K9970KT-23	Angle, Horizontal Kicker, 80" Long
6	35	T9004KT14	End Sleeve for 1/4" Cable 1/pk

3431 Nova Point Acorn Ln, GA 30101
(888) 439-0500 (770) 974-5100 fax

DRAWN	DATE	CHECKED	DATE
KAAM	1/11/10		
TITLE			
8' Ice Shield Assembly			
Flat Design			
DRAWING NO	T9971KT8		
REV	SHEET		
	OF 3		